

Anti-Claudin6 hlgG1 Reference Antibody

Product Information

Product Name	Anti-Claudin6 hlgG1 Reference Antibody
Storage temp.	Store at 2-8°C short term (1-2 weeks).Store at $\leq -20^{\circ}\text{C}$ long term. Avoid repeated freeze-thaw.
Catalog# / Size	GM-86863MAB-1mg / 1 mg GM-86863MAB-5mg / 5 mg GM-86863MAB-25mg / 25 mg GM-86863MAB-50mg / 50 mg GM-86863MAB-100mg / 100 mg

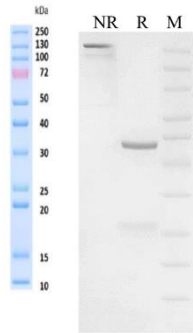
Antibody Information

Expression System	CHO
Aggregation	< 5% as determined by SEC-HPLC
Purity	> 95% as determined by SDS-PAGE
Endotoxin	< 1 EU/mg, determined by LAL gel clotting assay
Sterility	0.2 μm Filtered
Target	Claudin6
Clone	/
Alternative Names	Claudin-6, CLD6, CLDN6
Source/Isotype	Human IgG1(KHEM), kappa
Application	Flow cytometry
Description	Claudin6 gene belongs to CLAUDIN family and is an important intercellular junction protein, which is mainly expressed in epithelial cells. CLDN6 has a c-terminal PDZ binding site, which enables tight junction proteins to interact with some intracellular proteins and play an important role in cell connectivity and epithelial permeability. The study of the molecular structure of CLDN6 is the premise and basis for further understanding the properties and functions of CLDN6. Abnormal expression of CLDN6 may be involved in breast cancer, ovarian cancer, cervical cancer, gastric cancer and lung cancer, and so on many kinds of malignant tumor occurrence and the development process.
Formulation	phosphate-buffered solution, pH 7.4.

Version:3.1

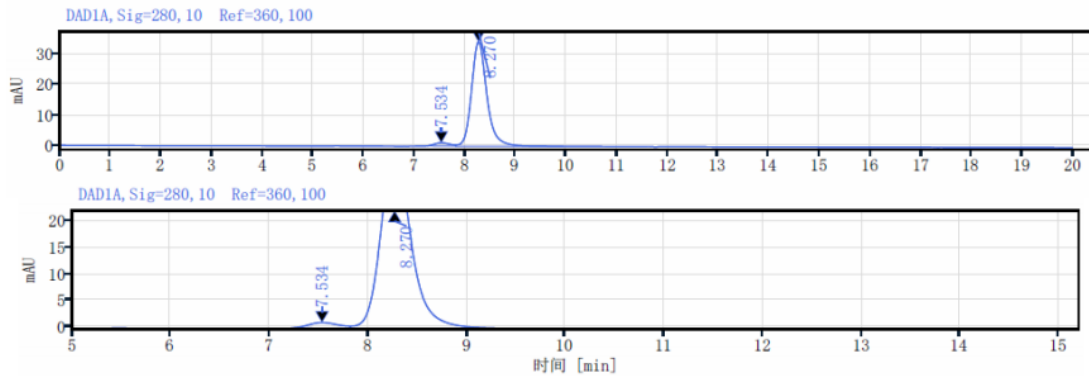
Data Examples

SDS-PAGE



On SDS-PAGE under reducing (R)/non-reducing(N-R) condition. The gel was stained overnight with Coomassie Blue. The purity of the protein is greater than 95%.

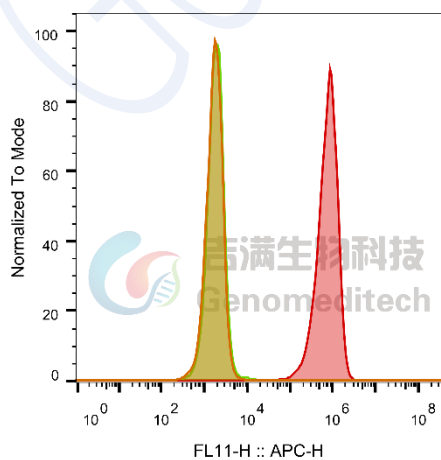
SEC-HPLC



The purity of this product is more than 95% verified by SEC-HPLC

Flow cytometry

H_CLDN6 CHO-K1 Cell Line (Catalog # GM-C03905) was stained with Anti-Claudin6 hIgG1 Reference Antibody (Catalog # GM-86863MAB) or isotype control antibody, followed by anti-Human IgG APC-conjugated Secondary Antibody.



SampleID	Geometric Mean : FL11-H
CHO-K1 anti-CLDN6+APC-2nd Ab	1700
CHO-K1 H_CLDN6 H_IgG+APC-2nd Ab	1839
CHO-K1 H_CLDN6 anti-CLDN6+APC-2nd Ab	7.04E5

Fig. FACS